

# INTERIM COVID-19 GUIDANCE FOR K-12 SCHOOLS

## STUDENT WITH NEW SYMPTOMS OF ILLNESS

Students with symptoms of illness should stay home and test for COVID-19.

- If test is negative, may return if at least 24 hours have passed since fever and symptoms have improved significantly.
- If test is positive, stay at home for 5 days. Isolation can end after Day 5 if symptoms are not present or are resolving and a diagnostic specimen collected on Day 5 or later tests negative. Consistent use of a well fitted face mask while indoors at school is **strongly recommended** through **Day 10**. If unable to test or choosing not to test, and symptoms are not present or are resolving, isolation can end after Day 10.

## STUDENT EXPOSED TO PERSON WITH COVID-19 IN ANY SETTING

If potential exposure occurs at a school setting, parents/caregivers should be notified of the potential exposure.

Students with exposure to someone with COVID-19 may continue to take part in all aspects of K-12 schooling, including sports and extracurricular activities, unless they develop symptoms or test positive for COVID-19. This includes students who have continuous household exposure (live with someone who has COVID-19). It is strongly recommended that exposed students wear a well-fitting mask indoors around others for at least 10 days following the date of last exposure, if not already doing so. It is recommended that the individual test for COVID-19 5 days after the exposure.

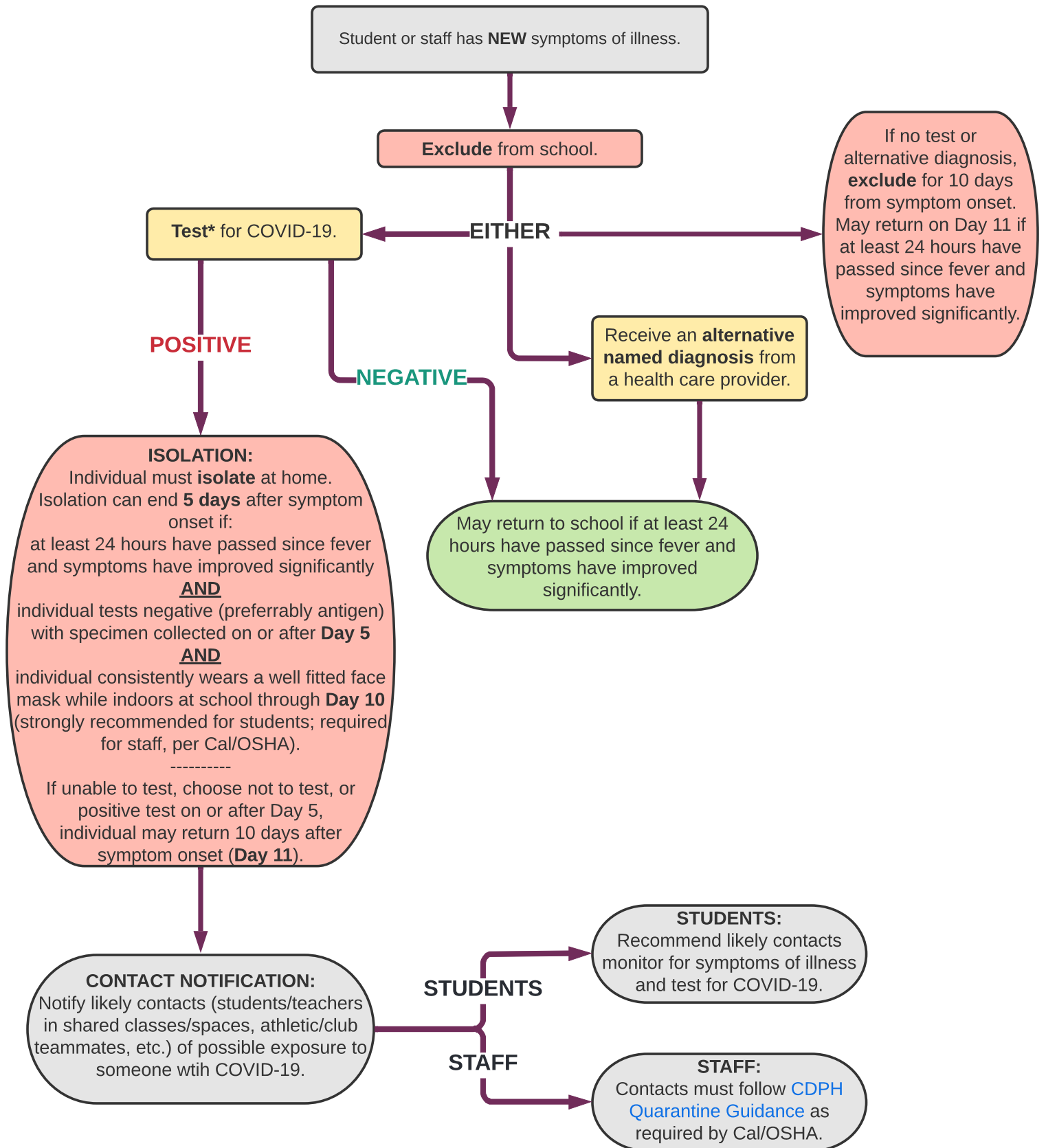
## STUDENTS WHO HAVE TESTED POSITIVE FOR COVID-19 IN THE PAST 90 DAYS

Asymptomatic students that have tested positive for COVID-19 within the past 90 days are not required to quarantine or test for COVID-19 in response to a new COVID-19 exposure. However, if a child develops new symptoms after being exposed to COVID-19, they should quarantine and test.

## CLASSROOM EXPERIENCES 3 OR MORE CASES OF COVID-19 WITHIN A TWO WEEK PERIOD

If a classroom/team/group has three or more cases of COVID-19 within a two week period, please contact SCPH at [SCPHschools@saccounty.net](mailto:SCPHschools@saccounty.net) for further recommendations.

# COVID-19 Decision Tree for K-12 Schools



\* PCR or rapid antigen test are acceptable. Asymptomatic individuals who have tested positive for COVID-19 are not required to re-test for 90 days following their initial infection. However, if individuals develop new symptoms following a COVID-19 exposure, they should isolate and test.  
 April 6, 2022